



# R247-E

24-HOUR SOLAR FLASHING BEACON

## 24 Hour Flashing Beacon for Warning Signs and Stop Signs

- Industry leading light output
- Compact, lightweight design to simplify installation
- Proven technology platform
- MUTCD Compliant

Ultra-efficient solar technology delivers high intensity light output in a compact, lightweight, and easy to install solar engine.

### High Intensity Light Output

The R247-E provides a high intensity 24 hour flashing beacon that provides year round performance in the most challenging solar conditions. An ultra-efficient energy management system coupled with the latest LED technology delivers a high intensity, continuous flash output.

### Easy Installation

With its highly efficient and compact design, installation is quick and uncomplicated, dramatically reducing installation costs. Retro-fitting can be done where existing sign bases are used to enhance existing marked crosswalks in minutes, and new installations can be completed without the cost of larger poles and bases.

### Advanced User-Interface

The R247-E features an on-board user interface and display that provides quick configuration and status monitoring.

### Reliable

Designed with Carmanah's industry leading solar modeling tools to provide dependable year-after-year operation.

### Trusted

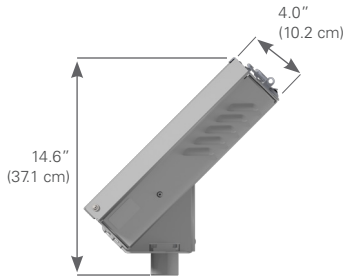
With thousands of installations in the field, Carmanah solar beacons and solar LED lights have become the benchmark in traffic applications and other transportation applications worldwide.



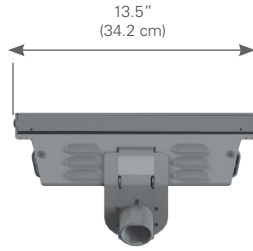
REPRESENTED IN YOUR REGION BY:

## DIMENSIONS

Engine Side View



Engine Bottom View



## APPLICATIONS



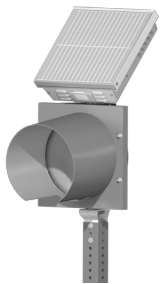
Stop Beacon  
(Red Indication)



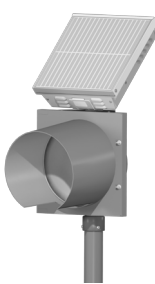
Warning Beacon  
(Yellow Indication)

## MOUNTING OPTIONS

2.0" - 2.5" Perforated  
Square Post Mount



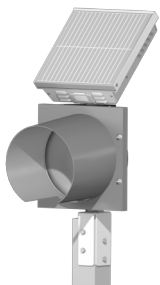
2.38" - 2.88" Diameter  
Round Post Mount



4.0" - 4.5" Diameter  
Round Post Mount



Wood Post Mount



Side Post Mount



# R247-E

## 24-HOUR SOLAR FLASHING BEACON

## SPECIFICATIONS

|                               |  |
|-------------------------------|--|
| On-Board User Interface (OBU) | Adjustable, auto-scrolling LED display   |
|                               | Ambient auto-adjust configuration  |
|                               | Night dimming configuration  |
|                               | System test, status and fault detection  |
| Optical                       | MUTCD Compliant*   |
|                               | ITE VTCSSH LED circular signal supplement standard   |
|                               | 12" (300mm) diameter LED module, yellow or red   |
| Energy Collection             | Dominant wavelength: 590 nm (yellow), 625 nm (red)   |
|                               | 10 Watt high-efficiency photovoltaic cell with bypass diodes   |
| Energy Storage                | Maximum power point tracking with temperature compensation (MPPT-TC) for optimal energy collection in all solar conditions |
|                               | Replaceable, recyclable best in-class 12V dual battery system. Sealed, maintenance-free.                                   |
|                               | Designed for minimum 5 year battery life   |
| Solar Engine Construction     | Lightweight for ease of handling   |
|                               | Quick connect terminals and strapping for efficient installation   |
|                               | Weatherproof, vented solar engine enclosure for ambient air transfer (NEMA 3R)   |
|                               | Hinged access lid for access to on-board user interface and batteries  |
| Operating Performance         | Compact, lightweight aluminum housing  |
|                               | Top of pole mounting to standard 2" sign posts and 4" poles  |
|                               | Pre-wired assembly designed to minimize installation time  |
| Warranty                      | Weight: 19.8 lb (9 kg) including batteries   |
|                               | Rated for operation 24 hours per day, year-round with a minimum of .94 sun hours   |
|                               | 3-year limited warranty  |

\* Meets all requirements for design, illumination, and colour of signal sections required by 2009 MUTCD, Chapter 4L, Flashing Beacons (MUTCD: Manual on Uniform Traffic Control Devices).



The management system governing the manufacture of this product is ISO 9001:2008 certified.



NATIONAL  
COMPLETE STREETS  
COALITION



Specifications subject to local environmental conditions.

Specifications may be subject to change.

US Patent No 6,573,659. Other patents pending.

"Carmanah" and Carmanah logo are trademarks of Carmanah Technologies Corp.

© 2015, Carmanah Technologies Corp.

Document: SPC\_TRAF\_R247E\_Rev1